



# History of Internet Personal Appliances in IETF

Larry Masinter

March 2001

# References

- ◆ RFC 2324
  - ◆ HTCPCP: Hypertext Coffee Pot Control Protocol
- ◆ RFC 2325
  - ◆ Definition of Managed Objects for Drip-Type Heated Beverage Hardware Devices using SMIv2

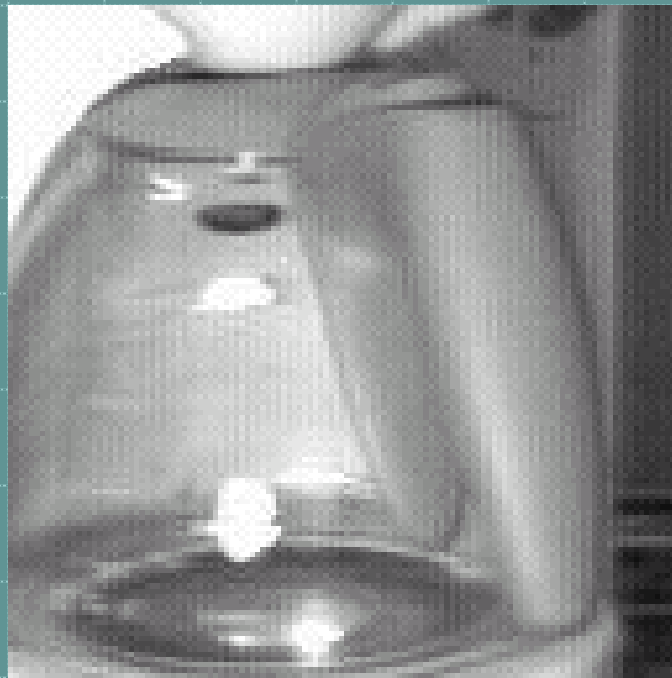
# Internet Toaster

- ◆ 1990 Interop demonstration, using SNMP
- ◆ Reference in RFC 2235



# Cambridge Coffee Pot

- ◆ 1994 Video (webcam) of coffee pot status



# CMU Coke Machine

- ◆ On Internet in 1992
- ◆ Uses “finger” protocol (precursor to presence information in IMPP)

# Sun Java-controlled Java

- ◆ Demonstrated WWW8 in 1998
- ◆ Used RMI for control between applet control panel and Java embedded controller
- ◆ Full automation control & configuration

# Summary

- ◆ Many of these were jokes or humorous examples
- ◆ Some issues were serious
- ◆ Make sure that what you do is actually better